

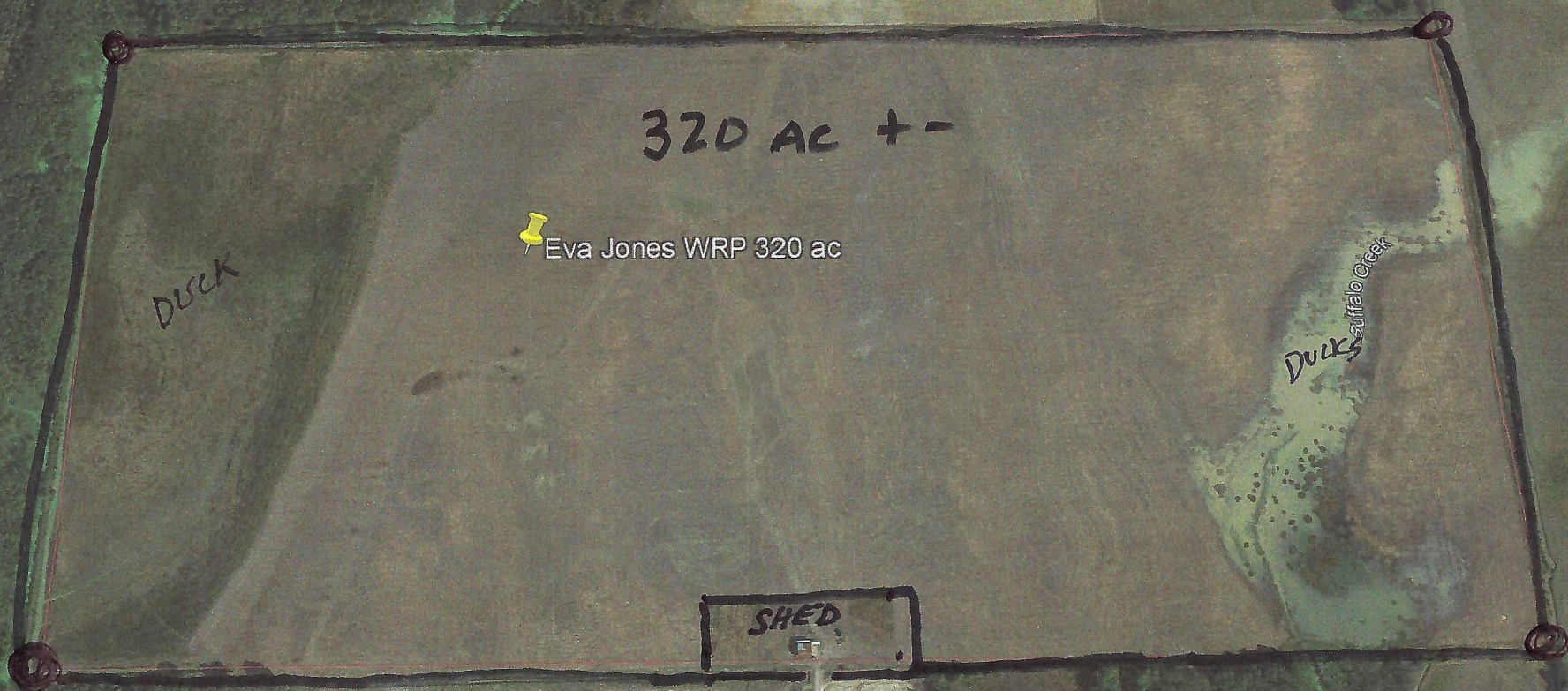


Untitled Map

Write a description for your map.

Legend

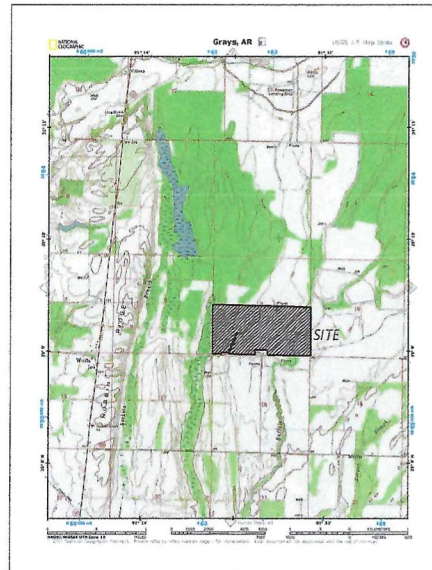
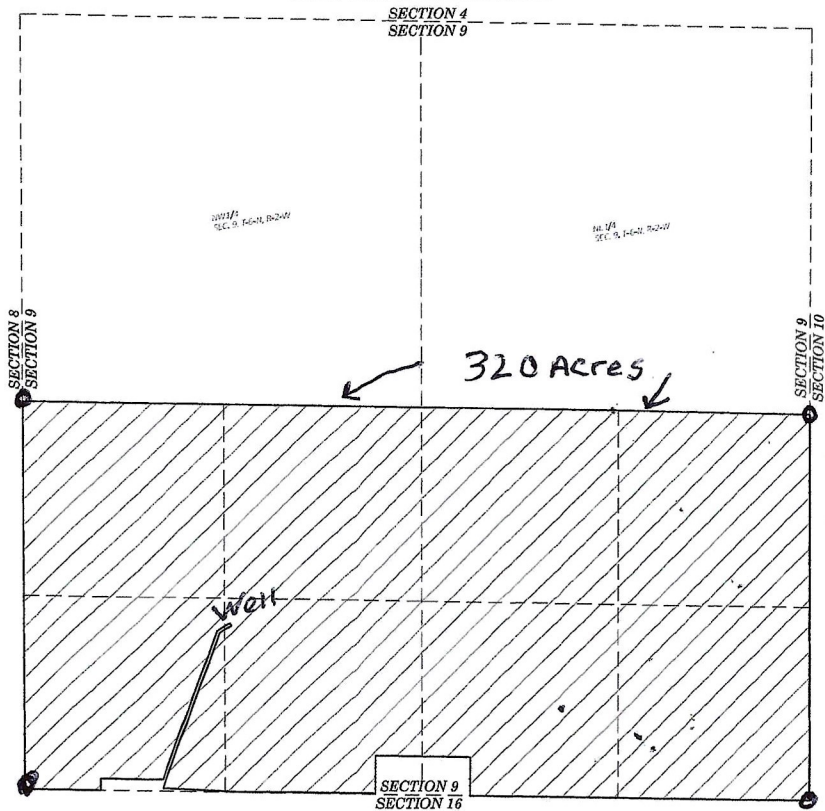
-  Eva Jones WRP 320 ac
-  Line Measure



**SURVEY AND PLAT OF
EVA KYLE JONES WRE BOUNDARY SURVEY
LOCATED IN SECTION 9, TOWNSHIP 6 NORTH, RANGE 2 WEST, WOODRUFF
COUNTY, ARKANSAS
NRCS AGREEMENT NO. 54-7103-16-01KKT**



**WETLANDS RESERVE EASEMENT
PART OF SECTION 9, TOWNSHIP 6 NORTH, RANGE 2 WEST
WOODRUFF COUNTY, ARKANSAS**



I hereby certify that the above plat represents a survey made by me on this day, and all easements, encroachments, and improvements disclosed by this survey are shown. An independent search for easements, covenants, encumbrances, or any other facts which an accurate title search may disclose was not performed.

This is to certify that the survey was done by the undersigned, in accordance with the most recent minimum standards for boundary property surveys, as set forth by the Arkansas State Board of Licensure for Professional Engineers and Land Surveyors. The accuracy and position tolerance also are in accordance with aerial surveys.

TWIN CREEKS SURVEYING, L.L.C.

Plat of NRCS Conservation Easement
NRCS Agreement Number 54-7103-16-01KKT
on lands of Eva Kyle Jones prepared for USDA- Natural
Resources Conservation Service
Natural Resources Conservation Service Easement
Contract Number: 54-7103-16-01KKT
Total Acreage: 318.29 Acres +/-

SHEET NO.	DESCRIPTION	DRAWN BY:	A. COOKE	Alex Cooke P.O. Box 456 Moriah, AR 72173
1	VICINITY MAP, OVERALL VIEW	APPROVED BY:	A. COOKE	Phone: 503.425.3808 twincreeksurveying@gmail.com
2	WETLANDS RESERVE EASEMENT SURVEY	DATE:	12/21/16	State Code 500-064-01W-02-05-000-74-1.708
3	LEGAL DESCRIPTIONS, COORDINATE TABLES	SHEET NO.	1 OF 3	



Bearings are based on NAD 83 State Plane
Coordinates derived from an OPUS Solution.
AR NAD 83 Zone 12
Convergence Angle: 072'23.10"
Scale Factor: 0.99994915
Distances converted to ground.
Base Point
N=292363.91
E=1546855.43

- REFERENCES**
1. General Land Office Plat dated August 20, 1844.
 2. State Survey No. 506958.
 3. State Survey No. 2016023509.
 4. State Survey No. 201307300009.
 5. Warranty Deed-Book AA-87 Page 54.

ACREAGE CHART

SECTION 9, T-6-N, R-2-W

LINE	BEARING	DISTANCE
1	N 72° 23' 10" E	197.88
2	W 27° 24' 4" W	200.00
3	S 72° 23' 10" E	198.71
4	N 89° 17' 19" W	500.00
5	S 89° 17' 19" W	500.00
6	N 89° 17' 19" W	500.00
7	N 89° 17' 19" W	500.00
8	N 89° 17' 19" W	500.00
9	N 89° 17' 19" W	500.00
10	N 89° 17' 19" W	500.00
11	N 89° 17' 19" W	500.00
12	N 89° 17' 19" W	500.00
13	N 89° 17' 19" W	500.00
14	N 89° 17' 19" W	500.00
15	N 89° 17' 19" W	500.00
16	N 89° 17' 19" W	500.00
17	N 89° 17' 19" W	500.00
18	N 89° 17' 19" W	500.00
19	N 89° 17' 19" W	500.00
20	N 89° 17' 19" W	500.00

20 Acres/Section

318.29 ACRES +/-

- SURVEY NOTES**
1. Jason Williams RTK GPS used to perform the survey. Radio Frequency=462.50.
 2. Carlson Survey Plus Data Collector with Carlson Survey Workbox 4.0 was used for data collection.
 3. Corners not referenced were set to location.
 4. Any encroachments are as shown.
 5. Flood zone information was researched as part of this survey.
 6. Due to accessibility of online information, ownership is labeled as per ownership map in the Woodruff County courthouse.
 7. Object monuments were set wherever there were under water at the time of survey or inaccessible.
 8. Survey was rendered on 11/21/16 to change wording in the title block. This plat supersedes any earlier dated plats.

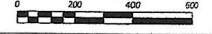


I hereby certify that the above plat represents a survey made by me on this day, and all encumbrances, both ancient and modern, and improvements disclosed by this survey are shown, as independent research for easements, covenants, encumbrances, or any other facts which an accurate title search may disclose was not performed.

This is to certify that the survey was done by the undersigned, in accordance with the most recent minimum standards for boundary property surveys as set forth by the Arkansas State Board of Licensure for Professional Engineers and Land Surveyors. The accuracy and position tolerance also are in accordance with rural surveys.

LEGEND

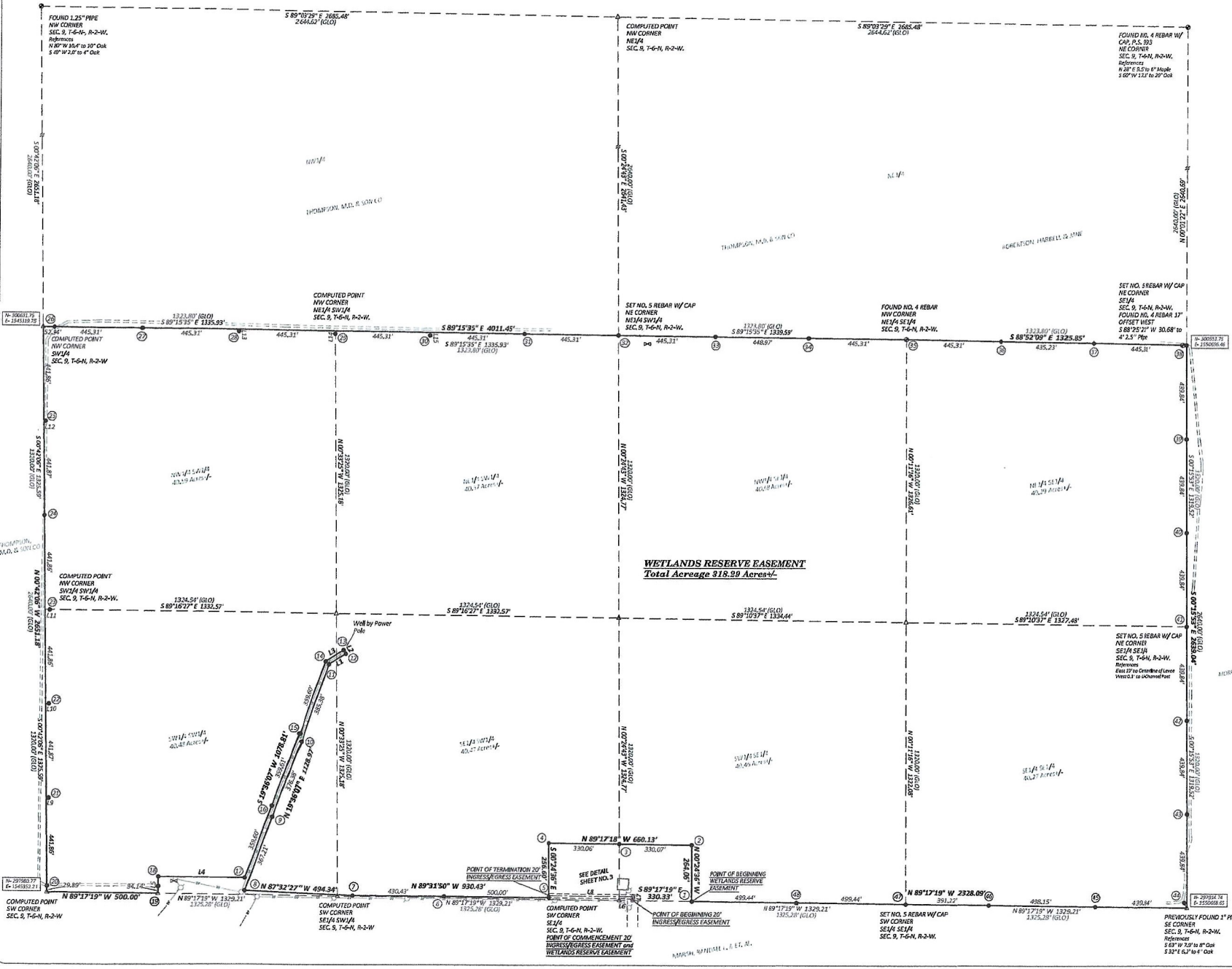
- Found Monument As Shown
- Computed Point
- Set No. 5 Rebar WJ Cap
- (GLO) General Land Office
- ≡ Broken Line
- Firm Road/Levee
- - - Proprietary Line
- Boundary Line
- ≡ Well
- ⊥ Power Pole
- ⊥ Overhead Electric



TWIN CREEKS SURVEYING, L.L.C.

Plot of NRCS Conservation Easement
NRCS Agreement Number 54-7103-16-01KKT
on lands of Eva Kyle Jones prepared for USDA- Natural
Resources Conservation Service
Natural Resources Conservation Service Easement
Contract Number: 54-7103-16-01KKT
Total Acreage: 318.29 Acres +/-

DRAWN BY:	A. COOKE	Alex Cooke
APPROVED BY:	A. COOKE	P.O. Box 456 Windsor, AR 72173 Phone: 501-423-8908
DATE:	11/21/16	twincreeksurveying@gmail.com
SHEET NO.	2 OF 3	



WETLANDS RESERVE EASEMENT
Total Acreage 318.29 Acres +/-

SEE DETAIL SHEET NO. 3

APPROXIMATE REPRESENTATION