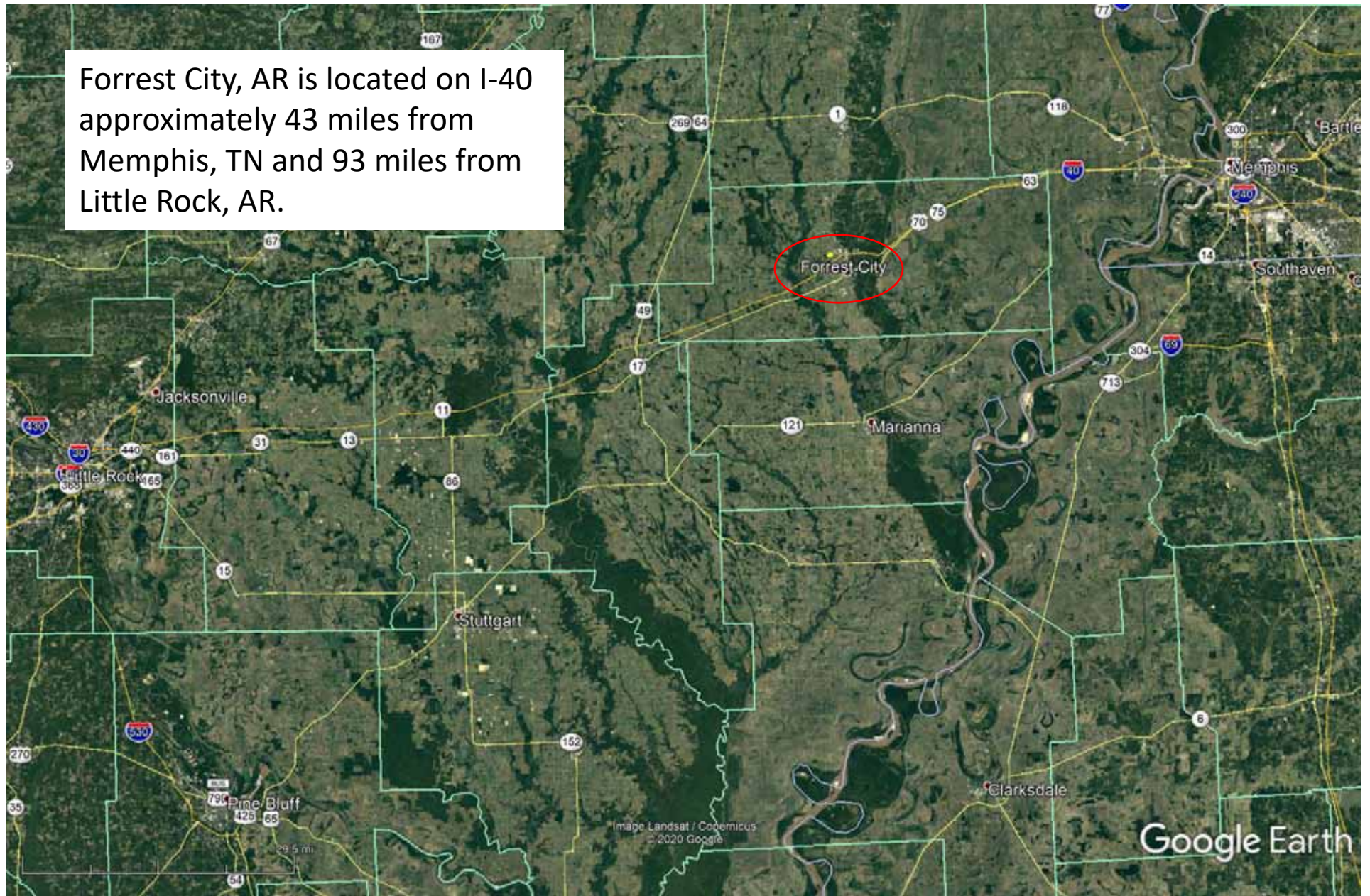
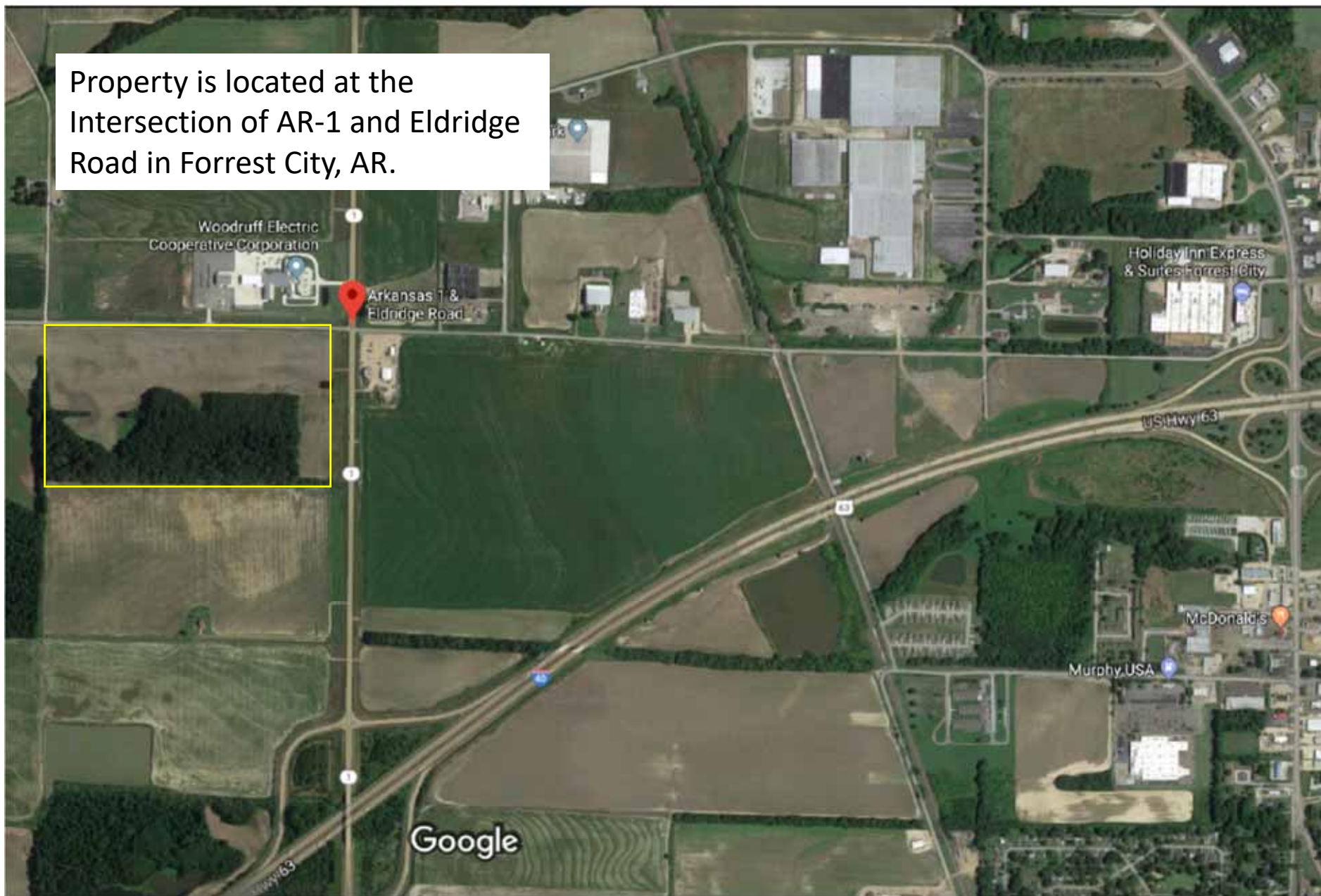


Forrest City, AR is located on I-40 approximately 43 miles from Memphis, TN and 93 miles from Little Rock, AR.

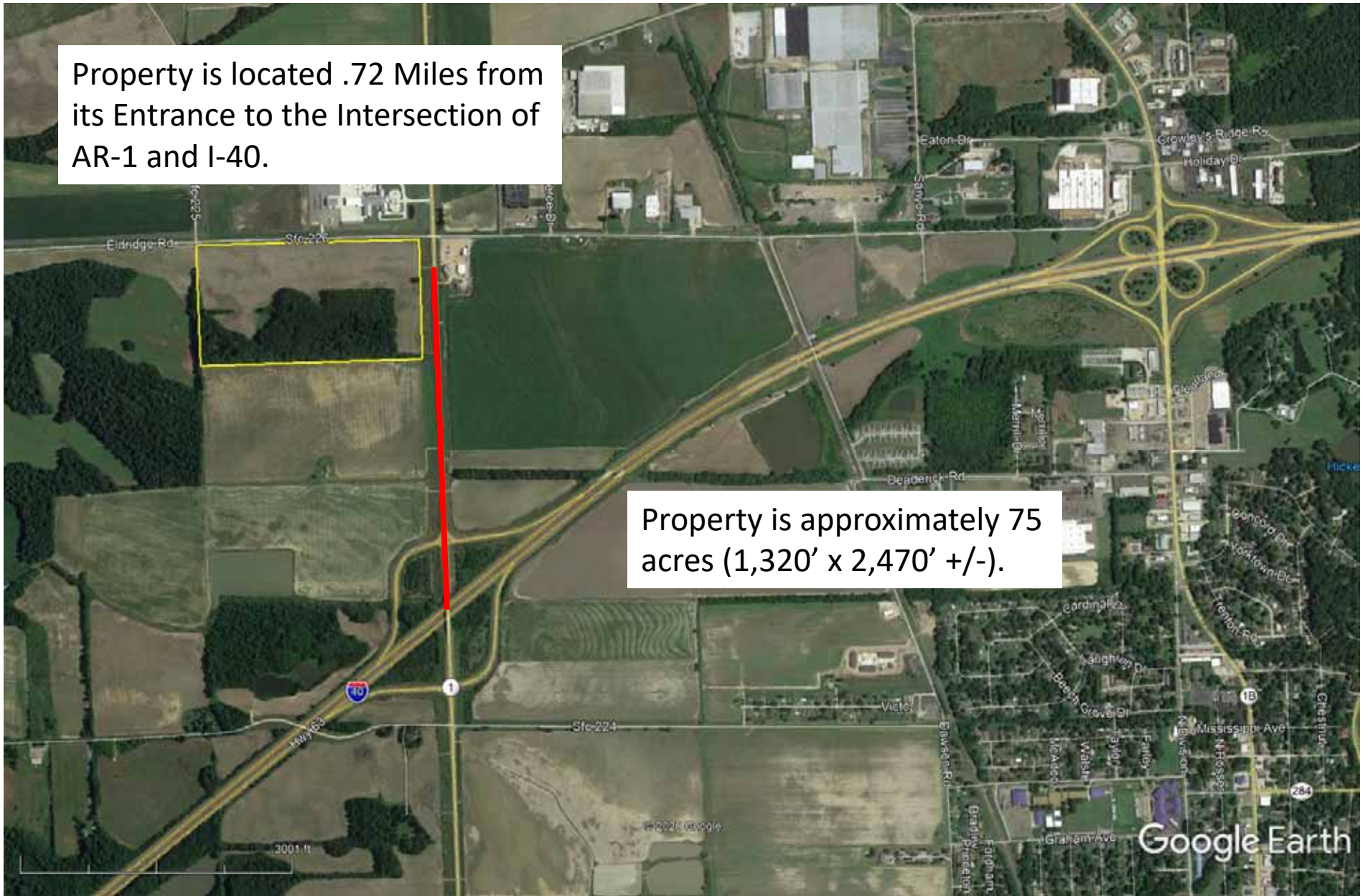


Property is located at the
Intersection of AR-1 and Eldridge
Road in Forrest City, AR.

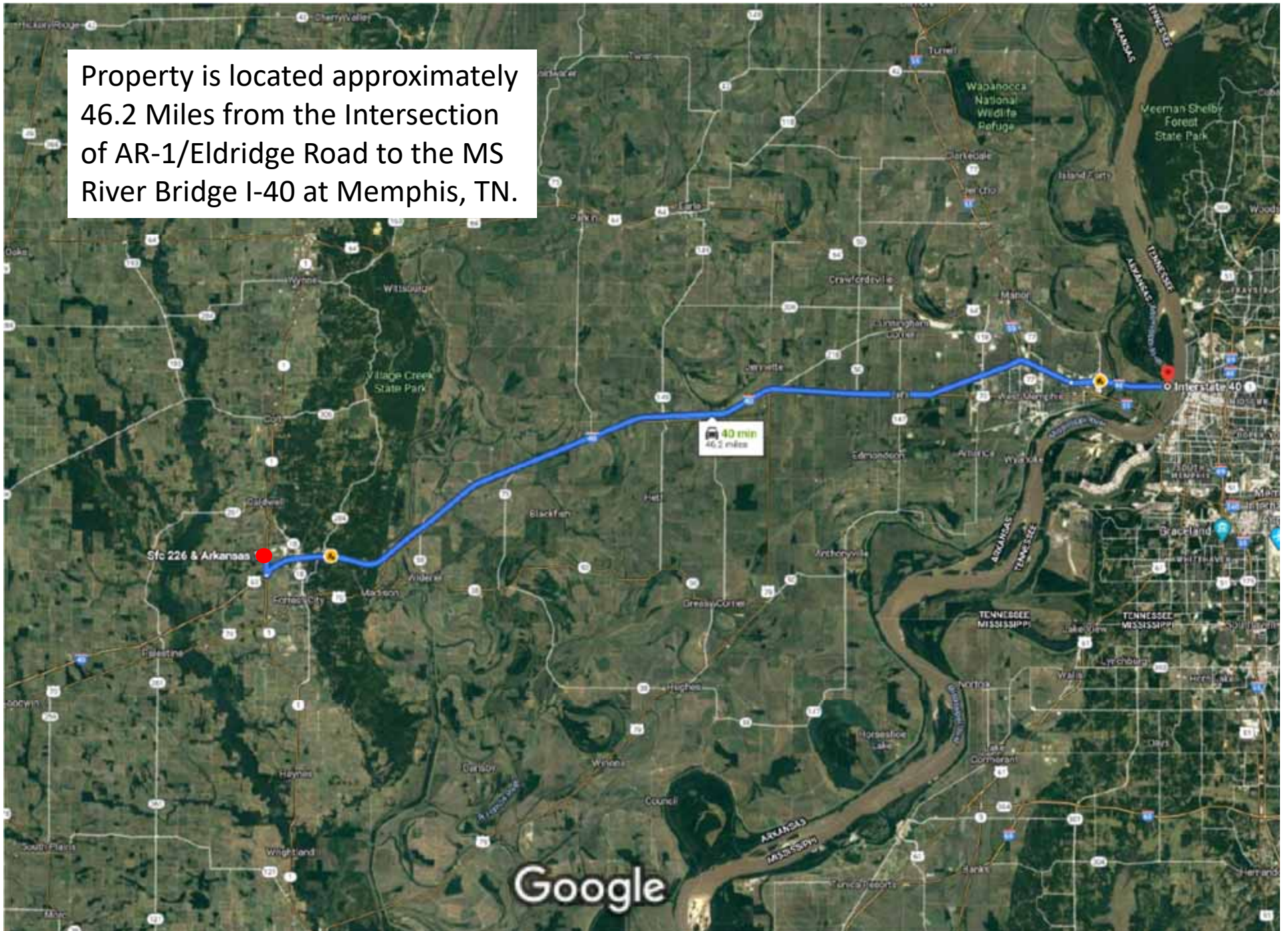


Property is located .72 Miles from its Entrance to the Intersection of AR-1 and I-40.

Property is approximately 75 acres (1,320' x 2,470' +/-).

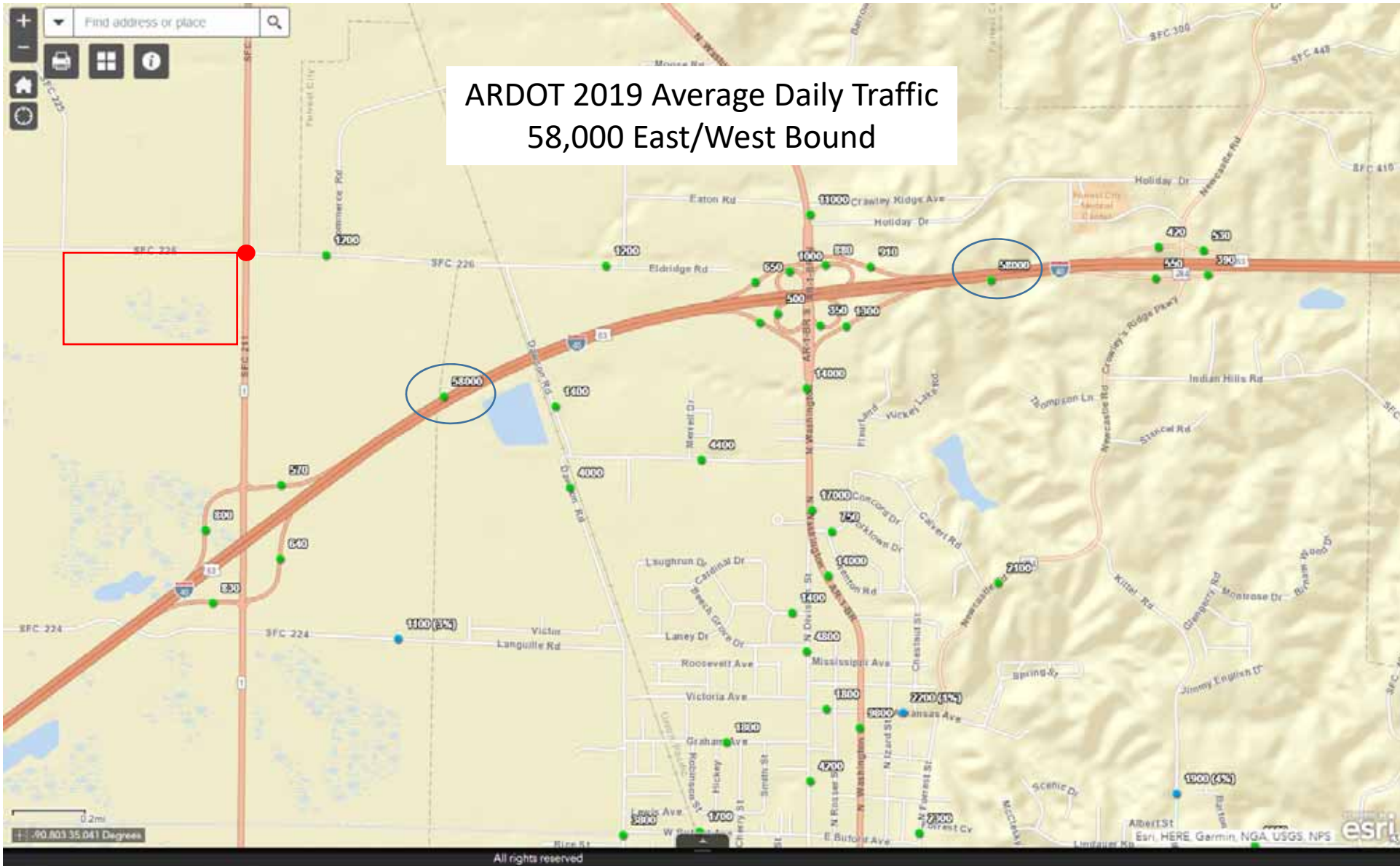


Property is located approximately 46.2 Miles from the Intersection of AR-1/Eldridge Road to the MS River Bridge I-40 at Memphis, TN.



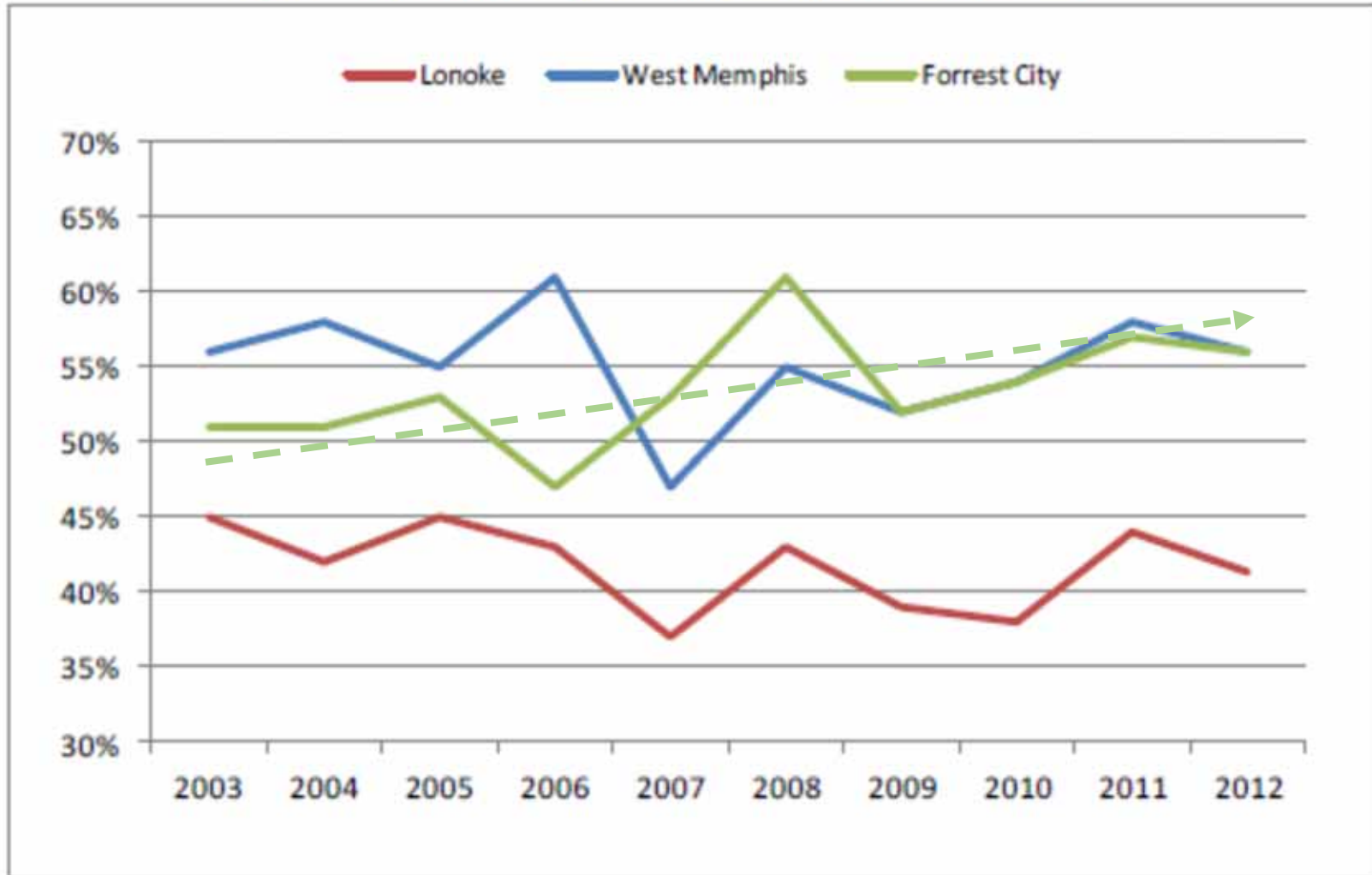
Property is located approximately 87.3 Miles from the Intersection of AR-1/Eldridge Road to the AR River Bridge/I-440 at Little Rock, AR.





AR Feasibility Study August 2014

Figure 3: Truck Percentage of Traffic on Interstate 40, 2003 – 2012



Source: Arkansas State Highway and Transportation Department