

Legal Description
 8.80 acre site lying in the NW 1/4 of Section 28, T-44N, R-24E, and John's a fractional part of Lot 27, Lake Plantation, Lake, Intersecting Property at 228 to the office of Civil Court Clerk and Executive Recorder for Crittenden County, Arkansas, and being more particularly described as follows:
 Commencing at the Southwest corner of said Lot 27 being 11929.0' x 6182.0' in 4028 feet to 231.60' on of bearing S89°15'15\"/>

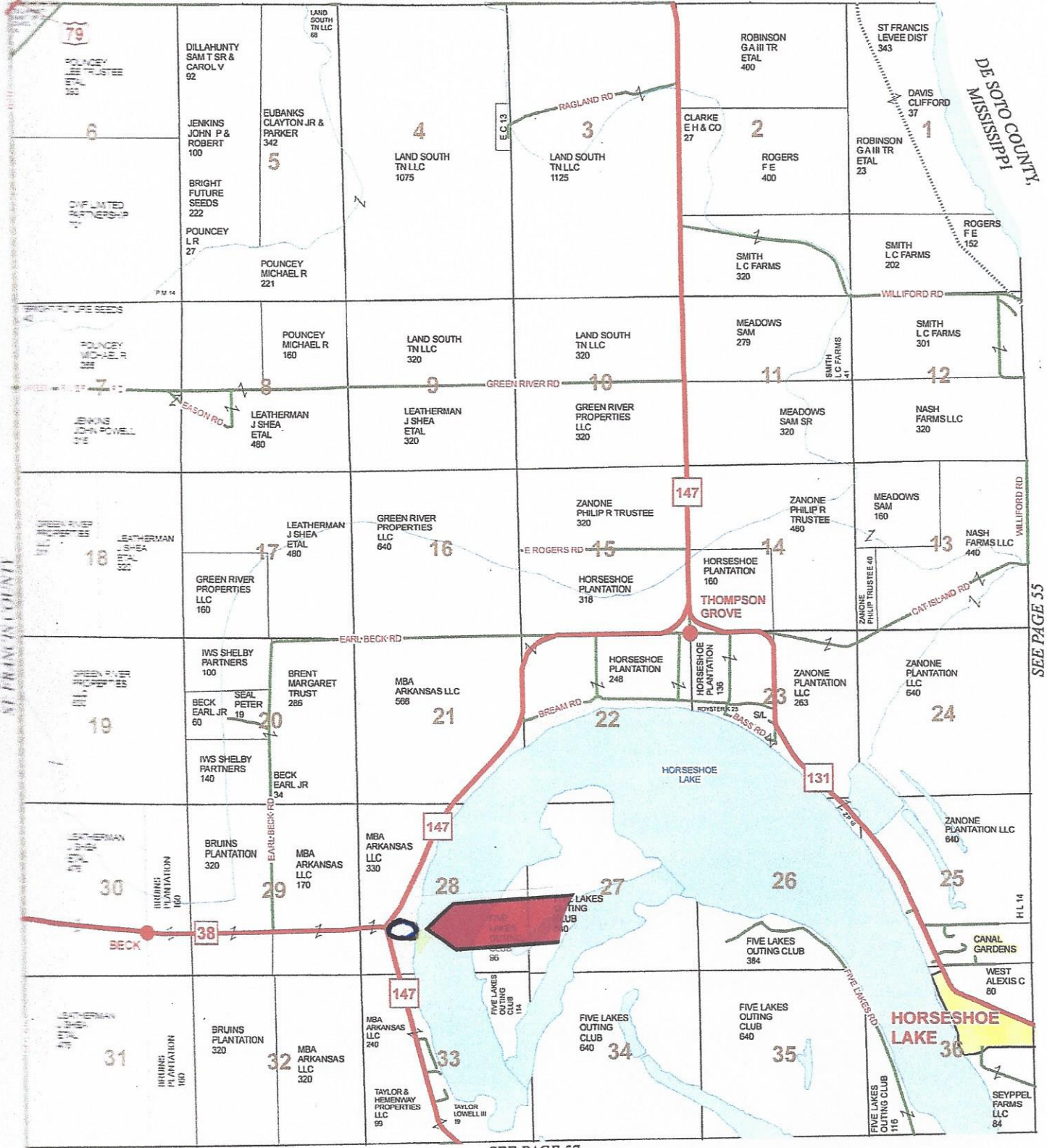
DECREED:	REVISION:
DRAWN:	
DISCUS:	
SCALE:	
PROJECT NO.:	
DESCRIPTION:	
TAYLOR - HOUSE SITE	
FRACTIONAL PART OF LOT 27, LAKE PLANTATION	
LAKE PLANTATION, CRITTENDEN COUNTY, AR	
HORSESHOE LAKE, CRITTENDEN COUNTY, AR	
Surrell Consulting Engineers	
205 SHOPPINGWAY BLVD. • (870) 758-8084 • WEST MEMPHIS, ARKANSAS 72301	
Civil Engineering	
Land Surveying	

Lots 1, 2, 3 & 4 Are water front
 Lots 6 & 7 Are interior lots with access to water via lots 6A & 7A.

The "LAKE PLACE" at the bridge

TOWNSHIP 4N • RANGE 7E

SEE PAGE 49



SEE PAGE 55

